

WESTRA AUCTION

**An Offering of Classic
John Deere Tractors
To Be Sold By
No-Reserve Auction**

Lincoln County Fairgrounds
27711 SD Hwy 17
Lennox, SD 57039



Saturday, November 26, 2022 at 10:00 AM



Westra Auction
LAND & REALTY

www.westrauction.com

November 26, 2022 · 10:00 AM

Premier Collector Tractor Auction

28 John Deere Tractors Extremely Rare and Exquisitely Restored Collector Tractors Desirable Pre-Emission Field Tractors In Excellent Condition

We will sell the following at public auction at the Lincoln County Fairgrounds 27711 SD HWY 17, Lennox, SD 57039. From Sioux Falls, SD, take Interstate 29 south 7 miles to Exit 68 (Parker), 4 ¼ miles west on 276th street, 1 ¼ miles south on HWY 17. Fairgrounds are located on the west side of the highway.

Auctioneers Note: Quality, Quality, Quality! There are few words that describe a sale of this caliber. I cannot convey the quality of restoration and originality these tractors have. If you're looking for extremely rare pieces of John Deere history or in the market for desirable pre-emission field tractors you will not be disappointed! These items are a snap shot in time and have the history and features to back up the solid reputation they have earned time and time again. This auction covers 3 decades of John Deere excellence including the last production John Deere 4255 tractor! Buy with confidence on sale day from 2 highly respected consigners. This sale will feature both live and online bidding. The auction will begin with smaller items at 10:00 A.M and promptly move into the larger items around 10:30. Make plans to attend this sale today!

Note: All prospective buyers who purchase an item are required to provide a Bank Letter of Guarantee before removal of the item. A Ride-N-Drive Guarantee will be permitted after you purchase the item on sale day. If you encounter a major problem with the engine or drivetrain, contact an auctioneer. Buyers will not be allowed to return items over minor issues. Auctioneer's reserve the right to make all decisions regarding item returns.

Viewing: Friday November 25th 2:00-6:00 P.M. at the Lincoln County Fairgrounds

Loadout: All items need to be removed by 12:00 P.M. Saturday December 3rd, 2022. A loader and operator will be present on sale day to assist in loading any small items. If you need to make other arrangements contact the auctioneer.

Lunch: B&T's BBQ

Terms: Cash/Good Check/Wire transfer/Credit Card (3% Fee). South Dakota sales tax of 4.5% will be collected. Not responsible for accidents or theft of items purchased. Any announcement made day of sale will supersede any advertisements. All buyers are encouraged to inspect all items and verify information. All items sold as is with no warranties or guarantees of any kind. Alcohol not permitted.



November 26, 2022 · 10:00 AM

Notes:



November 26, 2022 · 10:00 AM

Lot Number	Description
3	John Deere Category 2 Quick Hitch, Part# R47577
4	John Deere Hammer Strap
5	NOS John Deere Black Hydraulic Cylinder with Hoses
6	NOS John Deere Black Hydraulic Cylinder with Hoses
7	NOS Fuel Tank, Fits 50 and 55 Series, Part# BH92334
8	John Deere 3 Step Easy Up Step, with Grab Bar and Mounting Hardware
9	Miscellaneous Steps and Mounting Brackets in Factory John Deere Crate
10	John Deere 4440 Radiator Screen
10B	John Deere 4020 Right Hand Side Panel
11	Left Hand Battery Box Cover, Part# R57970
12	4000-4020 Cab/Canopy Axle Plate, Part# R41355
13	John Deere Step Tread
14	John Deere Plow Hitch Bar
15	Tractor Splitting Stand
16	2-John Deere 6 Bolt Rims, for 10.00-16" Tires
17	John Deere Top/Center Link Claw End
18	John Deere 50 Series Top/Center Link, Part# R66289
19A	John Deere 50 Series Top/Center Link, Part# R66289
20	John Deere 55 Series Top/Center Link, Part# R80052
21	Late Platform Operator's Shield for Open Stations, Fits 50 Series
22	Late Platform Floorboard for Open Stations, Fits 50 Series



November 26, 2022 · 10:00 AM

Lot Number	Description
23	NOS Light Harness for Open Station Tractors, Part# RE16738
21B	50 Series Investigator II Dash, Used, Complete, Taken from a 4450
24	NOS John Deere Black Hydraulic Cylinder with Two New Hoses
25	John Deere Black Hydraulic Cylinder with Two New Hoses
26	6 John Deere Suitcase Weights, 40-55 Series, Part# R58823
27	John Deere Front Weight Bracket, Part# R53614, Bolt Hole Centers: 14" x 3"
28	Hardware for Suitcase Weights, Includes Bolts and Retainers
29	2 John Deere Heavy-Duty Offset Cast Wheel Centers with Wedges, Part# 41020
30	2 John Deere Heavy-Duty Offset Cast Wheel Centers with Rims, Part# R81273, Rim Size: 16" x 38"
31	Box of Used Rim to Wheel Wedges for Use on Cast Centers
32	Set of 86mm Axle Wedges, Used on HD Cast or 10-Bolt Hubs
33	1 Pair of John Deere 2wd Rubber Front Fenders, Like New, Part# RE67850, Comes in Factory Crate
34	1 Pair of John Deere Rubber MFWD Front Fenders, Like New, Part# R75321, Comes with Mounting Brackets
35	1 Pair of John Deere MFWD Front Fender Mounting Brackets, Fits 55 Series Tractors, Part# R75321 & R75322
36	NOS John Deere 40-55 Series 3 rd Remote SCV Kit, New in Factory Sealed Box

The Following Items Will Sell In Lot Order During the Tractor Sale

39	John Deere 3 rd SCV Kit. Complete, used kit for 50/55 Series Tractors.
55A	John Deere 5-Tine Grapple Fork, New, Unassembled in Factory Crate
57A	New John Deere 3 rd SCV Kit. Complete in the Box.



November 26, 2022 · 10:00 AM

Lot 37: 1971 John Deere 3020 Standard



- SN: T113R152604R
- 65 Hours on Tach (Not Actual)
- Syncro Transmission
- Original Standard Sheet Metal
- 3 Hydraulics
- 2 Front Weights, 2 Sets Rear Weights
- Factory Engine and Hydraulic Oil Heater Option



November 26, 2022 · 10:00 AM

Lot 38: 1992 John Deere 4055 MFWD



- SN: RW4055P011298
- 6,120 Hours on Working Tach
- Powershift Transmission
- New 18.4-42 Rear Tires
- 16.9-26 Front Tires
- 2 Hydraulics
- 14 Front Weights
- Quick Hitch, Hammer Strap



Lot 39: John Deere 3rd SCV Kit

- Complete, Used Kit for 50/55 Series Tractors



westrauction.com

November 26, 2022 · 10:00 AM

Lot 40: 1992 John Deere 4455 2wd



- SN: RW4455P021315
- Tach Shows 12,316 Hours
- Powershift Transmission
- 18.4-42 Rear Tires with Duals
- 14L-16.1 Front Tires
- 3 Hydraulics
- 14 Front Weights
- Quick Hitch, Hammer Strap
- Factory Radar
- Side Light Option



November 26, 2022 · 10:00 AM

Lot 41: 1982 John Deere 4440



- SN: 4440P062621RW
- 6,304 Hours on Working Tach
- Powershift Transmission
- Open Station Fenders
- HD Offset Cast Wheels

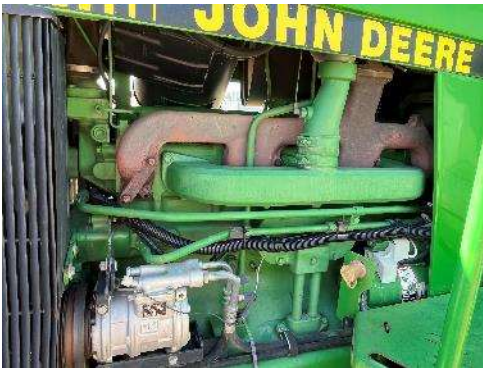


November 26, 2022 · 10:00 AM

Lot 42: 1994 John Deere 4560 MFWD



- SN: RW4560P004776
- Tach Shows 9,348 Hours
- Powershift Transmission
- 18.4-42 Rear Tires with Duals
- 14.9-30 Front Tires
- 3 Hydraulics
- 20 Front Weights
- Quick Hitch, Hammer Strap
- Factory Radar



November 26, 2022 · 10:00 AM

Lot 43: 2003 John Deere 7810 MFWD



- SN: RW7810A091124
- Tach Shows 5,537 Hours
- 20 Speed Auto-Quad with E Range Transmission
- Left Hand Reverser
- 18.4-42 Rear Tires
- 16.9-28 Front Tires
- 3 Hydraulics
- 14 Front Weights, 450 lb Rear
- Quick Hitch, Hammer Strap



November 26, 2022 · 10:00 AM

Lot 44: 1972 John Deere 4020 HFWD



- SN: T213P265401R
- Tach Shows 1,384 Hours
- Powershift Transmission
- Factory-Built HWFD
- Factory Cab
- New 18.4-34 Rear Tires
- New 14.9-24 Front Tires
- 3 Hydraulics



November 26, 2022 · 10:00 AM

Lot 45: 1992 John Deere 4055 2wd



- SN: RW4055P010157
- Tach Shows 4,840 Hours
- Powershift Transmission
- 18.4-38 Rear Tires
- 14L-16.1 Front Tires
- 3 Hydraulics
- 14 Front Weights
- Long Axles
- Factory Radar
- Quick Hitch, Hammer Strap

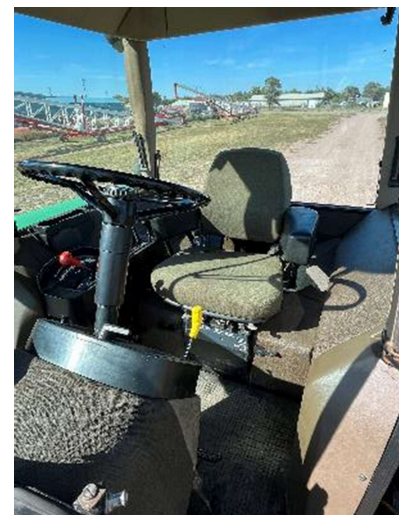
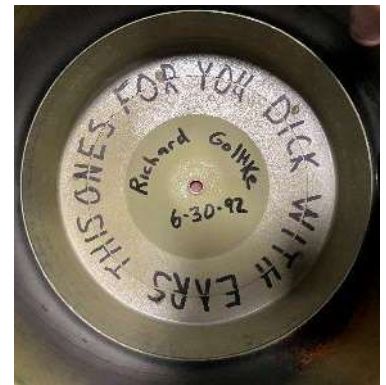
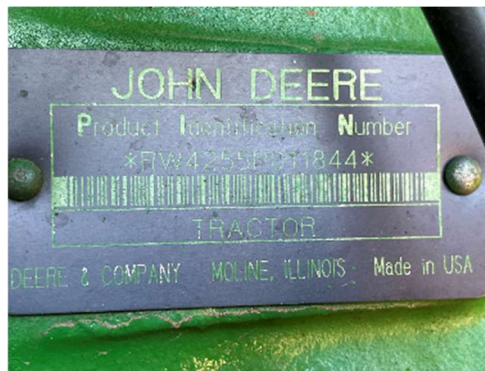


November 26, 2022 · 10:00 AM

Lot 46: 1992 John Deere 4255 2wd



- SN: RW4255P011844
- The Last 4255 Built
- Tach Shows 3,555 Hours
- Powershift Transmission
- New 18.4-42 Rear Tires
- 11.00-16 Front Tires
- 3 Hydraulics
- 14 Front Weights
- Quick Hitch, Hammer Strap
- Original Set of Factory Wheels and 420/80/46 Rear Tires are Included





GENERATION II ERA 1972 - 1992				
	40	42	44	Total
30 Series	15146	40337	74547	130,030
40 Series	12614	29723	68679	111,016
50 Series	6547	11355	26816	44,718
55 Series	5793	7119	15067	27,979
Last Built	4055 - 11480	4255 - 11844	4455 - 23845	
GRAND TOTAL				313,743

Pictures taken at John Deere Waterloo Operations. Last 4455, 4255, & 4055 Built.

WATERLOO Weekly news



Published by and for the Employees of the John Deere Waterloo Operations
August 10, 1992, Vol 4 No 30

MAKING WAY FOR THE NEXT GENERATION...

Generation II: End of an Era

Following are excerpts from a speech presented by Harold Hulme, Manufacturing Supervisor, on July 15, the occasion of the production of the last Generation II Small Row Crop Tractor. The speech not only commemorated the event, but it provided an insightful product overview that will likely serve future scholars of our company's history in years to come. An estimated 300 employees attended the historic event which featured a professional photographer snapping group shots of employee teams associated with the manufacture of the tractors.



Harold Hulme (inset) addressed 300 people at ceremonies marking the last build of the the Generation II Small Row Crop Tractor.

"We're here today to pay homage to a truly great era of tractor engineering and manufacturing: Generation II Small Row Crop tractors. Its span of 20 years—1972 through 1992, its three models— with to-

tal production of 313,743 collectively. "Starting in the summer of 1972 the 30 Series was a giant step from the New Generation tractors of the 1960s. It provided better comfort and safety to the op-

erator. The SoundGard body was introduced... it was not just a cab. It provided four-post rollover protection, curved glass, posture seats and noise protection to 85 db(a). Tractor options included (continued on back)

GENERATION II /CONTINUED

power front-wheel drive, hydraulically controlled Perma (wet) Clutch, new transmission options—16 speed quad-range, 8-speed synchro-range and 13-speed creeper.

"Generation II coincided with an unprecedented rise in net farm income and demand for these tractors backed by farmers' ability to buy. This demand so outpaced manufacturing capacity, that expansion of the Waterloo Facilities was undertaken to meet those continuing demands— Engine Works, Z-1, T-10, 1010-1020, NES, Hydraulics and PEC.

"The 30-Series engineering design innovations were honored by the 'Design In Steel Award' from the American Iron and Steel Institute, and the award was bestowed upon the entire line of tractors. This generation of tractors made John Deere the world's largest tractor manufacturer.

"Six years later—1978— The Iron Horses... 40-Series... brought in higher horsepower, increased drawbar pull, greater three-point lift capacity and hydraulic reserve power. The SoundGard body offered better noise control to 77.5 db(a). There was a new Hydra-cushioned seat suspension.

"Four years later—1982— the longest new line... the 50-Series... again featured increased horsepower. Fuel efficiency had become critically important. In 1970, according to a government survey, fuel consumption represented 25 percent of the cost of operating a tractor. By 1980 this had increased to 35 percent. Fuel economy was improved through the application of Mechanical Front Wheel Drive, and a new 15-speed Powershift Transmission. But other improvements... varying by model... helped too. Other options were temperature modulated fan drive, an electronic warning system which monitored 10 critical vehicle and engine functions both

audibly and visually, and a reduced noise level to 73.5 db(a).

"Five years later— 1987— The Pacesetters 55-Series, featuring Deere's own Mechanical Front-Wheel-Drive design. The 55-Series had even better turning and stopping ability. More horsepower, turbo charged engines and viscous fan drive for better power and fuel economy. A new 15-speed Powershift Transmission allowed shifting on-the-go without clutch both forward and reverse. Also introduced was the John Deere IntelliTrak monitoring system and Personal Posture seat, with six way adjustment.

"Tractor 4455-23845 will be retired to the John Deere Archives.

"Tractor 4255-11844 has been purchased by one of our own, Richard Gohlke, Senior Quality Auditor. Twenty years ago yesterday, 14 July 1972, Richard released the first 30-Series tractors in the old T-1 building downtown. His son was born that day as well. Today, 20 years later, Richard is purchasing the last 4255 built.

"The 4055-11480 is scheduled to go to Moore Equipment Company, Chillicothe, Missouri and will be used in the John Deere Rental Program.

"We can all feel very special for having been an integral part of these innovative and productive years. These tractors not only allowed our company to prosper, but they have enabled each of us to live in a manner to which we have become accustomed. I have wondered many times where we might be had it not been for such success in engineering and manufacturing.

"Everyone here who has shared in this 20 year era deserves a round of applause for their ideas, dedication, cooperation, work ethic and quality mindedness that has made the Long Green Line number one in the field." — Harold Hulme



November 26, 2022 · 10:00 AM

Lot 47: 1987 John Deere 4450 MFWD



- SN: RW4450P024583
- 8,478 Hours on Working Tach
- Powershift Transmission
- Open Station Fenders
- HD Offset Cast Wheels



November 26, 2022 · 10:00 AM

Lot 48: 2003 John Deere 7810 MFWD



- SN: RW7810D090400
- Tach Shows 3,157 Hours
- IVT Transmission
- 18.4-42 Rear Tires with Duals
- 16.9-28 Front Tires
- 3 Hydraulics
- 14 Front Weights
- 2 Sets of 450 lb Rear Weights
- Quick Hitch, Hammer Strap

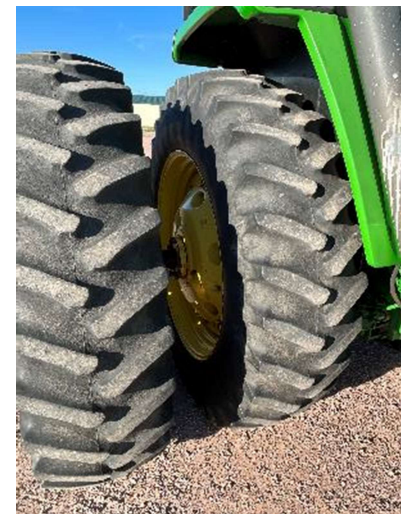


November 26, 2022 · 10:00 AM

Lot 49: 1994 John Deere 4760 2wd



- SN: RW4760P006089
- Tach Shows 10,965 Hours
- Powershift Transmission
- 18.4-42 Rear Tires with Duals
- 16.5L-16 Front Tires
- 3 Hydraulics
- 20 Front Weights
- 1 Set of 450 lb Rear Weights
- Quick Hitch, Hammer Strap

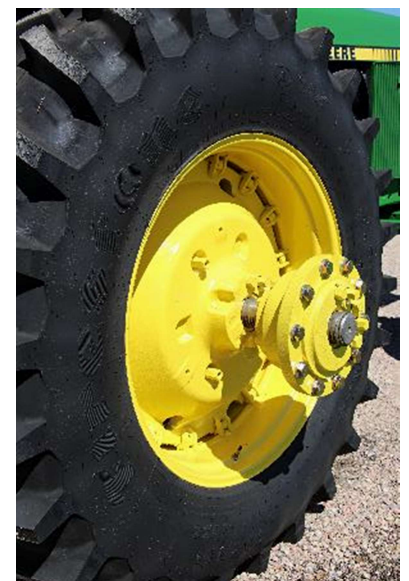
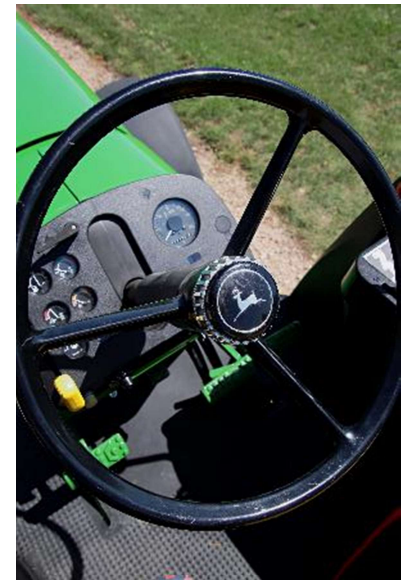


November 26, 2022 · 10:00 AM

Lot 50: 1983 John Deere 4250 2wd



- SN: RW4250H003378
- 819 Hours on Working Tach (Not Actual Hours)
- Quad Range Transmission
- Factory Open Station Fenders
- Production: 1 of 27



November 26, 2022 · 10:00 AM

Lot 51: 1992 John Deere 4255 MFWD



- SN: RW4255P010026
- Tach Shows 15,903 Hours
- Powershift Transmission
- New 18.4-42 Rear Tires
- 14.9-30 Front Tires
- 3 Hydraulics
- 14 Front Weights
- 1 Set of 450 lb Rear Weights
- Quick Hitch, Hammer Strap



November 26, 2022 · 10:00 AM

Lot 52: 1992 John Deere 4455 MFWD



- SN: RW4455P023053
- Tach Shows 6,235 Hours
- Powershift Transmission
- 18.4-42 Rear Tires
- 16.9-28 Front Tires
- 3 Hydraulics
- 20 Front Weights
- Quick Hitch, Hammer Strap



November 26, 2022 · 10:00 AM

Lot 53: 1972 John Deere 4020 HFWD



- SN: T213P267310R
- Tach Shows 10,109 Hours
- Powershift Transmission
- Factory-Built HFWD
- 18.4-34 Rear Tires
- 14.9-24 Front Tires
- 3 Hydraulics
- Hydraulic Pump Disconnect
- Exceptional Original Condition



November 26, 2022 · 10:00 AM

Lot 54: 2001 John Deere 7410 MFWD



- SN: RW7410R057401
- Tach Shows 7,048 Hours
- 20 Speed Power Quad Transmission with E Range
- Left Hand Reverser
- 18.4-38 Rear Tires
- 14.9-30 Front Tires
- 3 Hydraulics
- 14 Front Weights
- Quick Hitch, Hammer Strap



November 26, 2022 · 10:00 AM

Lot 55: 2003 John Deere 7710 MFWD



- SN: RW7710D090633
- Tach Shows 6,488 Hours
- IVT Transmission
- New 18.4-42 Rear Tires
- New 16.9-28 Front Tires
- 3 Hydraulics
- Quick Hitch, Hammer Strap
- Like New John Deere 741 Loader with Factory 3-Function Joystick



Lot 55A: John Deere 5-Tine Grapple Fork

- New, Unassembled in Factory Crate



westrauction.com

November 26, 2022 · 10:00 AM

Lot 56: 1982 John Deere 4040 HFWD



- SN: 4040P013435RW
- 1,500 Hours on Replacement Engine
- Powershift Transmission
- Factory Open Station Fenders
- Production: 1 of 1



November 26, 2022 · 10:00 AM

Lot 57: 1992 John Deere 4055 MFWD



- SN: RW4055P011168
- Tach Shows 5,208 Hours
- Powershift Transmission
- 18.4-38 Rear Tires
- 14.9-26 Front Tires
- 2 Hydraulics
- 14 Front Weights
- Quick Hitch, Hammer Strap
- Triple Step



Lot 57A: New John Deere 3rd SCV Kit

- Complete in Factory Box



westrauction.com

November 26, 2022 · 10:00 AM

Lot 58: 1992 John Deere 4255 2wd



- SN: RW4255P010906
- Tach Shows 4,448 Hours
- Powershift Transmission
- New 18.4-42 Rear Tires
- New 14L-16.1 Front Tires
- 3 Hydraulics
- 14 Front Weights
- Quick Hitch, Hammer Strap



November 26, 2022 · 10:00 AM

Lot 59: 1983 John Deere 4050 2wd



- SN: RW4050H001986
- Believed to Have About 3,000 Hours
- Quad Range Transmission
- Factory Open Station Fenders
- Production: 1 of 106



November 26, 2022 · 10:00 AM

Lot 60: 1994 John Deere 4960 2wd



- SN: RW4960P008473
- 8,149 Total Hours, Current Tach Shows 4,149 Hours
- Powershift Transmission
- 18.4-46 Rear Tires with Duals
- New 16.5L-16.1 Front Tires
- 3 Hydraulics
- Dual Lift Assist on 3-Point
- 20 Front Weights
- 1 Set of 450 lb Rear Weights
- Quick Hitch, Hammer Strap



November 26, 2022 · 10:00 AM

Lot 61: 2003 John Deere 7810 MFWD



- SN: RW7810D091055
- Tach Shows 7,369 Hours
- IVT Transmission
- 18.4-42 Rear Tires with Duals
- New 14.9-30 Front Tires
- 3 Hydraulics
- Triple Link Suspension
- 14 Front Weights
- Quick Hitch, Hammer Strap



November 26, 2022 · 10:00 AM

Lot 62: 1982 John Deere 4240 2wd



- SN: 4240H029486RW
- 4,285 Hours on Original Tach
- Quad Range Transmission
- Factory Open Station Fenders
- Production: 1 of 85

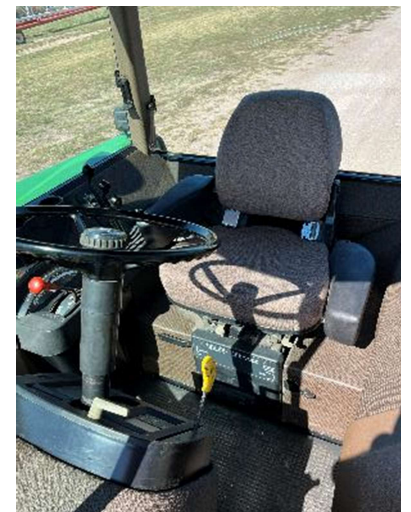
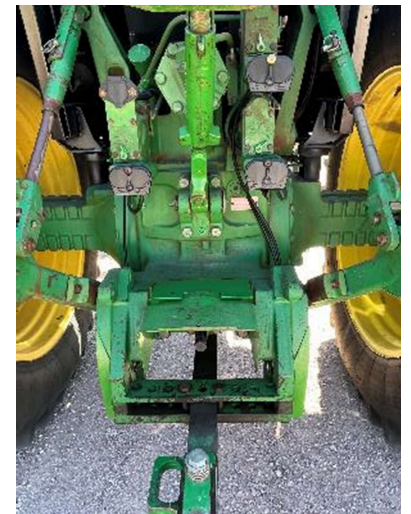


November 26, 2022 · 10:00 AM

Lot 63: 1994 John Deere 4560 2wd



- SN: RW4560P004705
- Tach Shows 1,856 Hours, Actual Hours Unknown
- Powershift Transmission
- 18.4-42 Rear Tires with Duals
- 14L-16.1 Front Tires
- 3 Hydraulics
- 20 Front Weights
- 1 Set of 450 lb Rear Weights
- Quick Hitch, Hammer Strap



November 26, 2022 · 10:00 AM

Lot 64: 1992 John Deere 4455 2wd



- SN: RW4455P021169
- Extremely Rare Bare Back
- Tach shows 5,718 Hours
- Powershift Transmission
- New 18.4-42 Rear Tires with Duals
- 11.00-16 Front Tires
- 3 Hydraulics
- 1 Set of 450 lb Rear Weights
- New Cab Kit



November 26, 2022 · 10:00 AM

Lot 65: 1972 John Deere 4020 2wd



- SN: T213P266918R
- Tach Shows 8,091 Hours
- Powershift Transmission
- Factory Cab
- 18.4-34 Rear Tires
- 11L-15 Front Tires
- 2 Hydraulics
- Double Front Weight
- 2 Sets of Rear Weights
- Rebuilt Injection Pump
- Nice Original Condition



November 26, 2022 · 10:00 AM

Lot 66: John Deere 145A Plow



- SN: 110211
- 4-16" Bottoms
- Landing Hitch
- On-Land Guage Wheel
- All New JD Shares, Shins, and Landslides
- 2 Black JD Cylinders
- 4-Spring Coulters
- Original Paint





Our auctions are not about us.
They're about you and your lifetime investments.
As the real estate landscape evolves, one thing
We guarantee is that you can trust us to
get the job done right.

We strongly believe that selling land and property is about more than a profit. It's about the process from start-to-finish. And, our process is led with integrity, trust, and honesty. The relationships we've built over the years are the proof that our process works.



Joel R. Westra
605.310.6941
joel@westrauction.com



John Hauck
605.254-6966
john@westrauction.com



Joel A. Westra
605.957.5222
joelawestra@westrauction.com



Jonathan Hagena
605.728.7282
jonathan@westrauction.com



Visit our website to learn more, read the auction listing, and view photos:



westrauction.com