

ZOMER COMPANY

Upcoming Live Public Auction Of 191.54 Acres Of Lyon TWP,
Lyon County, IA Farmland & Pastureland! To Be Sold In 3 Separate Tracts!

Located Northwest of Inwood, IA!

Tract 1 — 79.51 Acres Of Cropland Tract 2 — 71.5 Acres Of Pastureland

Tract 3 — 40.53 Acres Of Cropland



Auction Date: November 29, 2021 @10:30 A.M.

**Jim & Deb Knudson, Mary Smidt and Carol & Michael
Evert Chalberg - Owners**

zomercompany.com

Auctioneers:

Zomer Company

1414 Main St., Rock Valley, IA 51247

Office— 712-476-9443

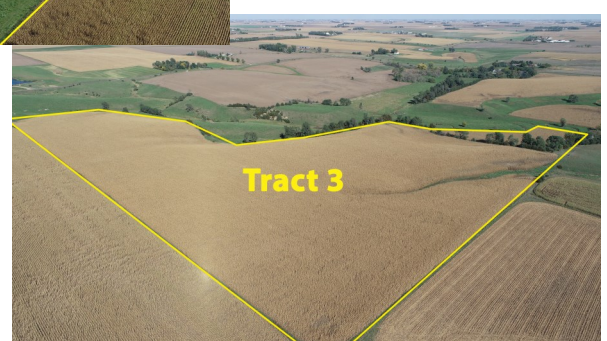
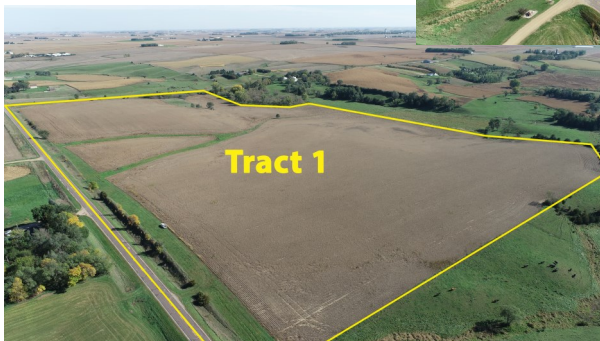
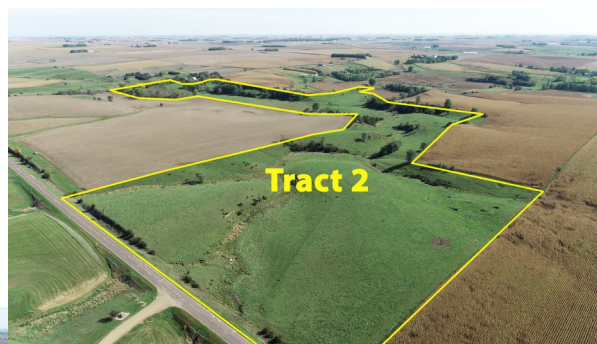
Broker: Mark Zomer - 712-470-2526 — Blake Zomer - 712-460-2552

Gary Van Den Berg - 712-470-2068 — Darrell Vande Vegte - 712-470-1125

Joel Westra - 605-310-6941 — Joel Westra, Jr. 605-957-5222

Auctioneers Note: Our company is honored to have been selected to offer these tracts of land at auction! This is a unique offering of property featuring a great opportunity to purchase cropland or pastureland! If you are farmer, investor or entrepreneur then be sure to take a look this great offering of property today! Call an auctioneer listed below today to receive a full informational packet! This auction will be held at the site of property!! Watch zomerauctions.com in case of inclement weather!

Location: from Oak St. Station in Inwood, IA go North on HWY 182 approx. 1/2 mile to Jefferson St in Inwood then go West on Jefferson St and continue onto K12(Cherry Ave) then go North on K12(Cherry Ave) for 1 mile to 220th St. then go West on 220th St. for 1 mile to Buchanan Ave then go North on Buchanan Ave for 3/4 mile to Tract 1 then continue North for 1/4 mile to 210th St then go West on 210th St for 1/2 mile to Tract 2. Tract 3 is located directly South of Tract 2 and is accessed by a access easement along the West property line of Tract 2. Auction signs will be posted. Watch zomerauctions.com for inclement weather! Auction will be held at the site of the farmland!



Auctioneers & Assistants:

Zomer Company

Mark Zomer - 712-470-2526 — Blake Zomer - 712-460-2552

Gary Van Den Berg - 712-470-2068 — Darrell Vande Vegte - 712-470-1125

Joel Westra - 605-310-6941 — Joel Westra, Jr. 605-957-5222

Legal Description Tract 1: Parcel Q in the NE1/4 of Section Two (2), Township Ninety-Eight (98) North, Range Forty-Eight (48) West of the 5th P.M., Lyon County, Iowa. Subject to all public easements and roadways of record.

General description of Tract 1: According to survey, this property contains 79.51 gross acres of farmland. According to FSA, this property contains approx. 70.81 tillable acres with the remainder in road and ditch and grass side hill and waterways. This farm has a corn and soybean base combined with the adjoining tracts with a PLC yield of 162bu on corn and a PLC yield of 49bu on soybeans. This farmland is classified as NHEL. The predominant soil types of property include: 410B2, C2-Moody, 401D2-Crofton, 33D, E, G-Steinauer, 37B-Alcester, 27B-Terril, 430-Ackmore, 411D2-Egan, 486-Davis. The CSR2 rating is 52.4 and the CSR1 rating is 47.2 on the tillable farmland. This farm is in a great location with great access off of 2 hard surface roads! Make plans today to attend this auction!

Legal Description Tract 2: Parcel P in the N1/2 AND Parcel R in the NE1/4, all located in Section Two (2), Township Ninety-Eight (98) North, Range Forty-Eight (48) West of the 5th P.M., Lyon County, Iowa. Subject to well easement to adjoining acreage site and all public easements and roadways of record.

General description of Tract 2: According to survey, this property consists of 71.5 gross acres of pastureland! This is a great tract of pastureland with a natural flowing creek to provide water for the property! This is a scenic tract of pastureland with some established trees for shade and great access from a hard surface road. This pastureland has well established grasses and would make a great addition to your operation! The buyer of this tract will be required to grant an ingress/egress access easement to the buyer of tract 3 along the West property line of tract 2 for access to tract 3 as shown by the survey. The acreage site which adjoins this property has a easement to use the well which is located on the Eastern end of this property. Contact an agent for details!

Legal Description Tract 3: Parcels O in the NW1/4 AND Parcel S in the NE1/4 , all located in Section Two (2), Township Ninety-Eight (98) North, Range Forty-Eight (48) West of the 5th P.M., Lyon County, Iowa. Subject to all public easements and roadways of record.

General description of Tract 3: According to survey, this property contains 40.53 gross acres of farmland. According to FSA, this property contains approx. 38.36 +/- tillable acres with the remainder in a small tree area. This farm has a corn and soybean base combined with the adjoining tracts with a PLC yield of 162bu on corn and a PLC yield of 49bu on soybeans. This farmland has 35.02 acres classified as HEL and approx. 3.34 acres classified as NHEL. The predominant soil types of property include: 410B2, C2-Moody, 401D2-Crofton, 33F, G-Steinauer, 37B-Alcester, 430-Ackmore. The CSR2 rating is 50.2 and the CSR1 rating is 43.1. Buyer of this tract will receive an access easement from the buyer of tract 2 along the West property line of tract 2 for ingress/egress access to tract 3. Contact an agent for details! Make plans today to attend this auction!

Viewing: Please contact agents to view the property due to the livestock grazing on the property.

Method of sale: Tracts will be sold in the order listed. Final bid price on each tract will be x the gross surveyed acres. Auction will be held live on site at the property.

Taxes: The current Real Estate Taxes according to the Lyon County Treasurer are approx. \$1,828.73 per year on Tract 1, approx. \$1,144.00 per year on Tract 2 and approx. \$932.19 per year on Tract 3. Taxes will be reassessed due to recent survey. Seller will pay the 2021 taxes which are due & payable in March and Sept of 2022.

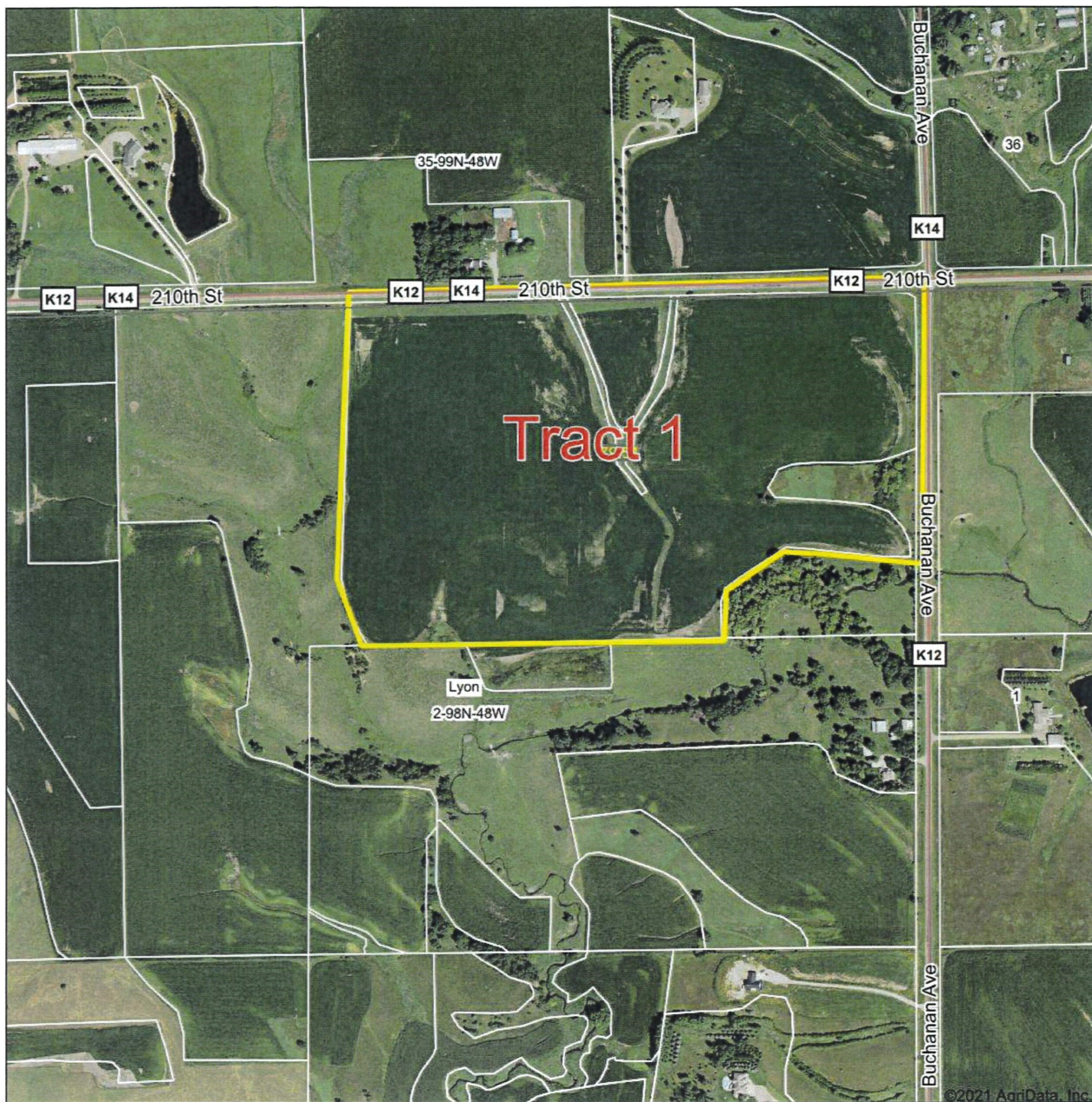
Possession: Possession of all the tracts will be on March 1, 2022 due to the current farm lease.

Terms: Purchaser(s) will be required to pay a non-refundable 15% of the purchase price due the day of the auction and also agree to enter into a purchase agreement with the remaining balance due and payable on closing day on or before January 17, 2022 when the buyer shall receive a clear and merchantable title to the property. These properties are being sold as is as a cash sale with no finance contingencies and as is with any/all defects and encroachments if any. While every effort has been made to ensure the accuracy of the information herein, all prospective buyers are encouraged to inspect the property and verify all data provided. No warranties are expressed or implied. Any lines on maps and pictures are for informational purposes only and are not guaranteed to be actual boundary lines of the property. Sellers do not warranty or guarantee that existing fences lie on the true boundary and any new fencing if any will be the responsibility of the purchasers pursuant to IA statutes. All buyers are encouraged to due buyers due diligence. Any announcements made day of the auction will supersede any advertisements. Aerial maps, soil maps and auction booklets are available upon request. This Property is being sold subject to the confirmation of the sellers. Auctioneers and Real Estate brokers are representing the sellers. If any additional information is requested, please contact auctioneers listed below. — **Paul Kippley —Attorney for Seller.**

TABLE OF CONTENTS

| | |
|-------------------------|----------|
| Auction Location & Time | Pg2 |
| Auction Terms | Pg 3-4 |
| Plat Map | Pg 6 |
| Tract 1 AgriData Map | Pg 7 |
| Tract 1 Soil Maps | Pg 8-10 |
| Tract 2 AgriData Map | Pg 11 |
| Tract 2 Soil Map | Pg 12 |
| Tract 3 AgriData Map | Pg 13 |
| Tract 3 Soil Maps | Pg 14-16 |
| FSA Crop Information | Pg 17-18 |
| FSA Map | Pg 19 |
| FSA Crop Information | Pg 20-21 |
| FSA Map | Pg 22 |
| Aerial Survey | Pg 23 |
| Additional Images | Pg 24-25 |

Aerial Map



Map Center: 43° 20' 36.34, -96° 28' 22.35

0ft 665ft 1330ft



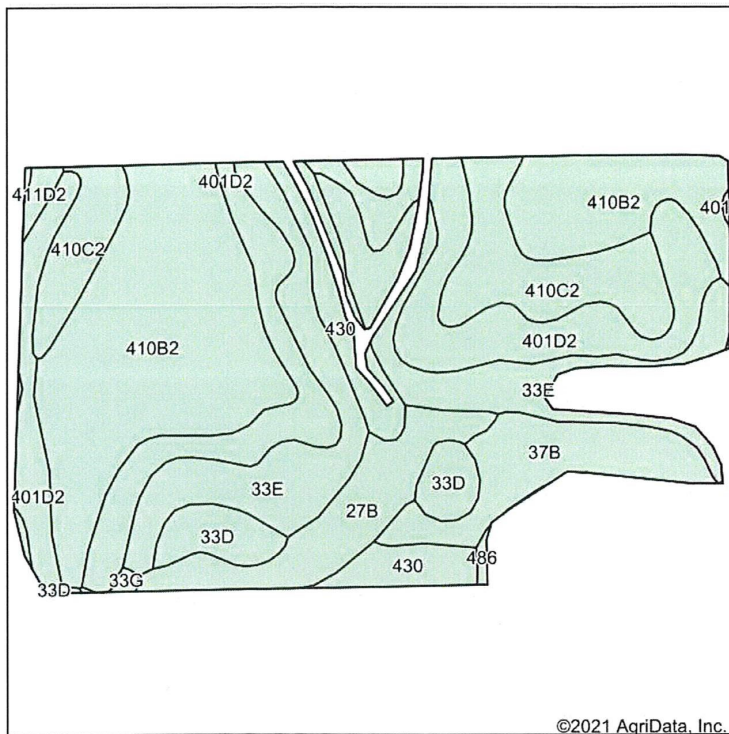
Maps Provided By:
surety
 CUSTOMIZED ONLINE MAPPING
 © AgriData, Inc. 2021 www.AgrDataInc.com

2-98N-48W
Lyon County
Iowa



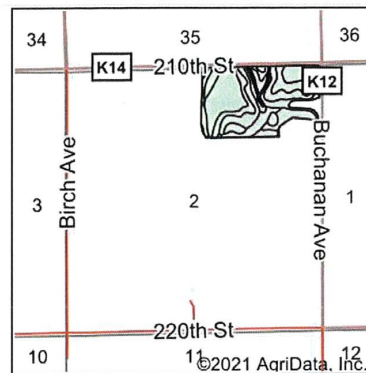
Field borders provided by Farm Service Agency as of 5/21/2008.

Soils Map



Soils data provided by USDA and NRCS.

©2021 AgriData, Inc.



State: **Iowa**
 County: **Lyon**
 Location: **2-98N-48W**
 Township: **Lyon**
 Acres: **70.81**
 Date: **10/11/2021**



Maps Provided By:



| Area Symbol: IA119, Soil Area Version: 29 | | | | | | | | |
|-------------------------------------------|-----------------------------------------------------------------|-------|------------------|------------------|--------------|-------------|-----------|-------------------|
| Code | Soil Description | Acres | Percent of field | Non-Irr Class *c | Irr Class *c | CSR2** | CSR | *n NCCPI Soybeans |
| 410B2 | Moody silty clay loam, cool, 2 to 6 percent slopes, eroded | 20.46 | 28.9% | Ile | | 67 | 63 | 65 |
| 401D2 | Crofton silt loam, 9 to 14 percent slopes, eroded | 14.89 | 21.0% | IIle | | 34 | | 64 |
| 33E | Steinauer clay loam, 14 to 18 percent slopes | 11.58 | 16.4% | IVe | | 19 | 19 | 53 |
| 410C2 | Moody silty clay loam, cool, 6 to 11 percent slopes, eroded | 7.33 | 10.4% | IIIle | | 65 | 48 | 63 |
| 37B | Alcester silty clay loam, cool, 2 to 6 percent slopes | 4.66 | 6.6% | Ile | IIIle | 73 | | 74 |
| 27B | Terril loam, 2 to 5 percent slopes | 4.64 | 6.6% | Ile | | 86 | 63 | 71 |
| 430 | Ackmore silt loam, 0 to 2 percent slopes, occasionally flooded | 3.74 | 5.3% | IIw | | 77 | 70 | 86 |
| 33D | Steinauer clay loam, 9 to 14 percent slopes | 2.71 | 3.8% | IVe | | 31 | 33 | 54 |
| 411D2 | Egan silty clay loam, 9 to 14 percent slopes, moderately eroded | 0.39 | 0.6% | IIIle | | 41 | 35 | 60 |
| 33G | Steinauer clay loam, 25 to 40 percent slopes | 0.26 | 0.4% | VIIle | | 6 | 5 | 11 |
| 486 | Davis loam, 0 to 2 percent slopes | 0.15 | 0.2% | Iw | | 66 | 70 | 82 |
| Weighted Average | | | | 2.74 | 0.20 | 52.4 | *- | *n 64.1 |

**IA has updated the CSR values for each county to CSR2.

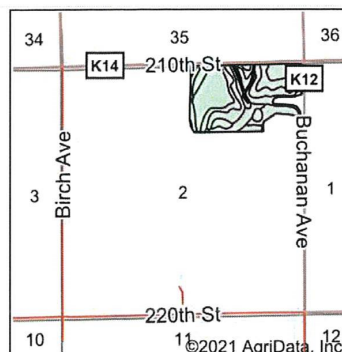
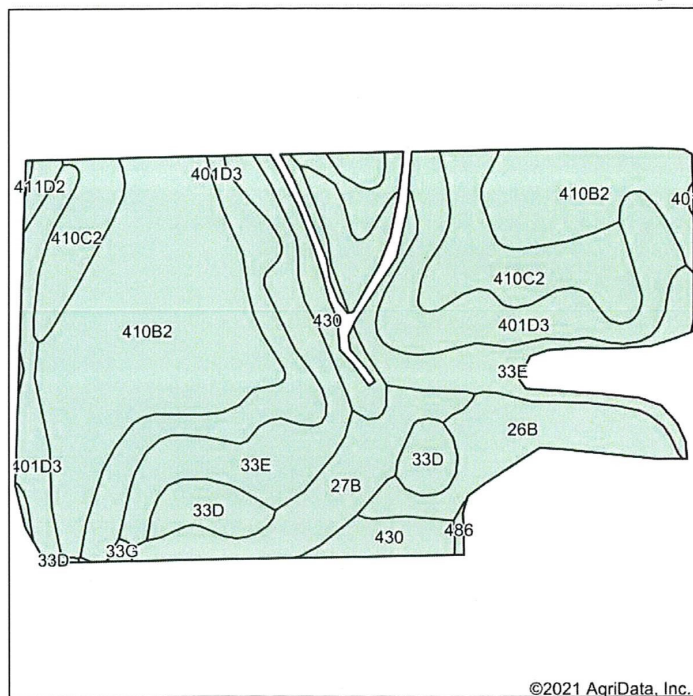
*- CSR weighted average cannot be calculated on the current soils data, use prior data version for csr values.

*n: The aggregation method is "Weighted Average using all components"

*c: Using Capabilities Class Dominant Condition Aggregation Method

Soils data provided by USDA and NRCS.

Soils Map



State: **Iowa**
 County: **Lyon**
 Location: **2-98N-48W**
 Township: **Lyon**
 Acres: **70.81**
 Date: **10/11/2021**



Maps Provided By:



Soils data provided by USDA and NRCS.

Archived Soils Ending 1/21/2012

| Code | Soil Description | Acres | Percent of field | Non-Irr Class *c | CSR* | Alfalfa hay Tons | Bromegrass alfalfa AUM | Bromegrass alfalfa hay Tons | Corn Bu | Corn Irrigated Bu | Grain sorghum Bu | Kentucky bluegrass AUM | Oats Bu | Smooth bromegrass AUM | Soybeans Bu | Winter wheat Bu |
|-------|-----------------------------------------------------------------|-------|------------------|------------------|------|------------------|------------------------|-----------------------------|---------|-------------------|------------------|------------------------|---------|-----------------------|-------------|-----------------|
| 410B2 | Moody silty clay loam, 2 to 5 percent slopes, moderately eroded | 20.54 | 29.0% | Ile | 63 | 3.3 | 5.5 | | 171 | 120 | 73 | | 85 | | | 42 |
| 401D3 | Crofton silt loam, 9 to 14 percent slopes, severely eroded | 14.90 | 21.0% | IIle | 33 | 2.7 | 3.1 | | 131 | | 45 | | 52 | | | 26 |
| 33E | Steinauer clay loam, 14 to 18 percent slopes | 11.56 | 16.3% | IVe | 19 | | 4 | | 112 | | | 2.2 | | 3.2 | | |
| 410C2 | Moody silty clay loam, 5 to 9 percent slopes, moderately eroded | 7.36 | 10.4% | IIle | 48 | 3 | 5 | | 151 | 105 | 60 | | 81 | | | 41 |
| 26B | Kennebec silty clay loam, 2 to 5 percent slopes | 4.61 | 6.5% | Ile | 70 | | 6.3 | 5.1 | 181 | | | 3 | 92 | 5 | | 46 |

Soils data provided by USDA and NRCS.

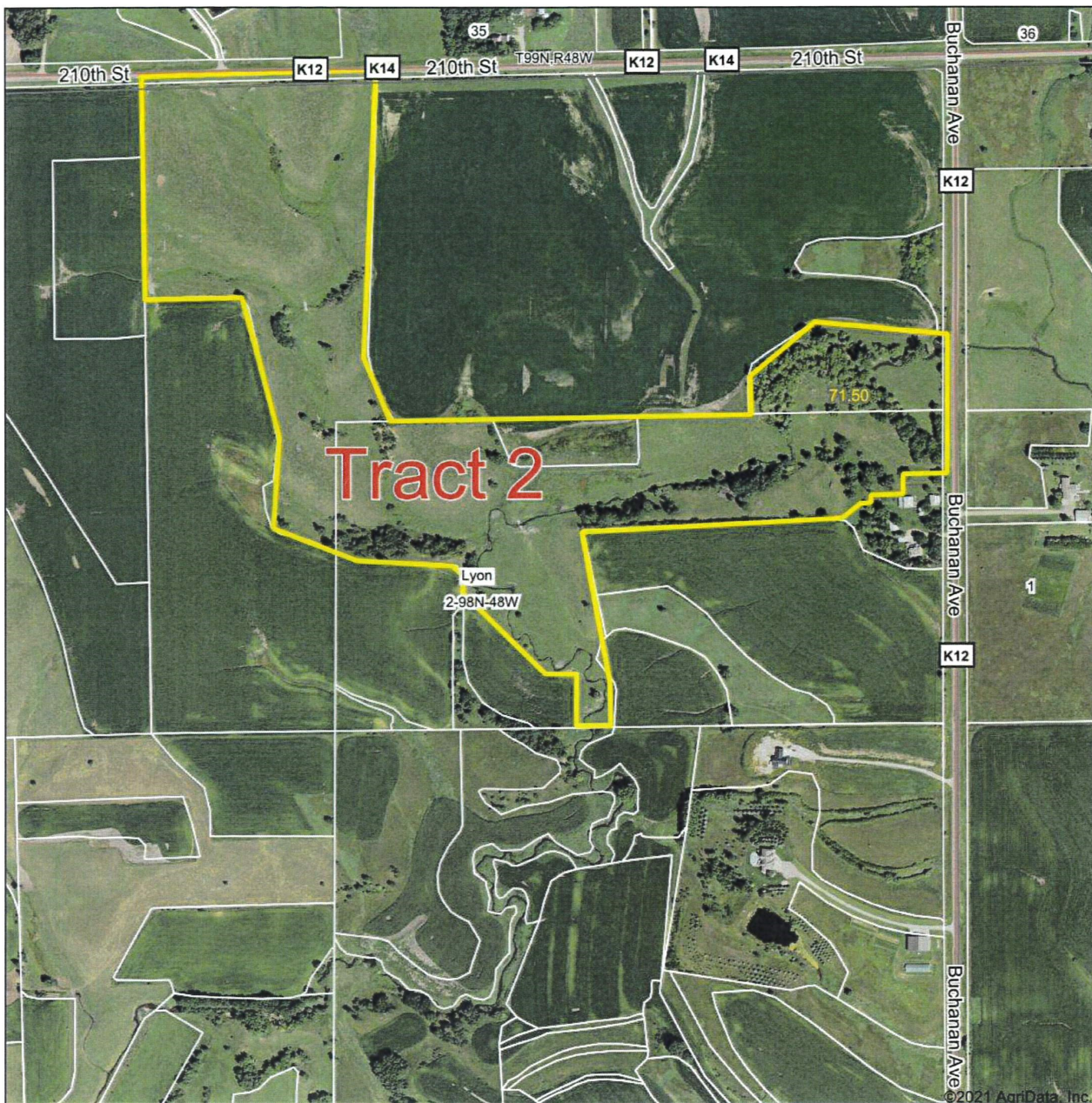
Maps Provided By:



© AgriData, Inc. 2021 www.AgrDataInc.com

| Code | Soil Description | Acres | Percent of field | Non-Irr Class *c | CSR* | Alfalfa hay Tons | Brome grass alfalfa AUM | Brome grass alfalfa hay Tons | Corn Bu | Corn Irrigated Bu | Grain sorghum Bu | Kentucky bluegrass AUM | Oats Bu | Smooth brome grass AUM | Soybeans Bu | Winter wheat Bu |
|----------------------------------------------------------------------------------------------|-----------------------------------------------------------------|-------|------------------|------------------|------|------------------|-------------------------|------------------------------|---------|-------------------|------------------|------------------------|---------|------------------------|-------------|-----------------|
| 27B | Terril loam, 2 to 5 percent slopes | 4.61 | 6.5% | Ile | 63 | | 5.8 | 4.7 | 171 | | | 2.8 | 85 | 4.6 | 42 | |
| 430 | Ackmore silty clay loam, 1 to 3 percent slopes | 3.71 | 5.2% | IIw | 70 | | 6.9 | 4.8 | 181 | | | 2.9 | 89 | 4.9 | 45 | |
| 33D | Steinauer clay loam, 9 to 14 percent slopes | 2.72 | 3.8% | IVe | 33 | 2.8 | 4.5 | | 131 | | 63 | | | 3.6 | 32 | 28 |
| 411D2 | Egan silty clay loam, 9 to 14 percent slopes, moderately eroded | 0.41 | 0.6% | IIIe | 35 | 3.1 | 5.2 | | 133 | | 55 | | 69 | | 35 | |
| 33G | Steinauer clay loam, 25 to 40 percent slopes | 0.27 | 0.4% | VIIe | 5 | | | | | | | 1.8 | | | | |
| 486 | Davis loam, 0 to 2 percent slopes | 0.12 | 0.2% | Iw | 70 | 4.3 | 7.2 | | 181 | | 82 | | 90 | | 45 | |
| *The CSR ratings are dated 1/21/2012 and will be available to aid in the transition to CSR3. | | | | | | | | | | | | | | | | |
| *c: Using Capabilities Class Dominant Condition Aggregation Method | | | | | | | | | | | | | | | | |
| Weighted Average | | 2.74 | 4.7% | 2.74 | 4.7% | 2.74 | 4.7% | 2.74 | 4.7% | 45.7 | 39.8 | 0.9 | 60.8 | 1.5 | 31.5 | 1.1 |

Aerial Map



Map Center: 43° 20' 26.96, -96° 28' 24.32

0ft 665ft 1330ft



Maps Provided By:



© AgriData, Inc. 2021 www.AgriDataInc.com

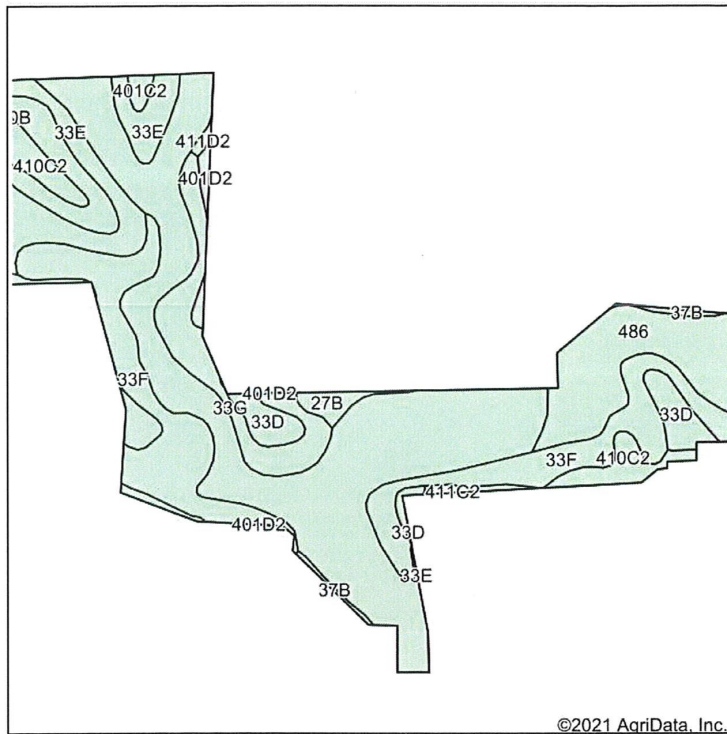
2-98N-48W
Lyon County
Iowa



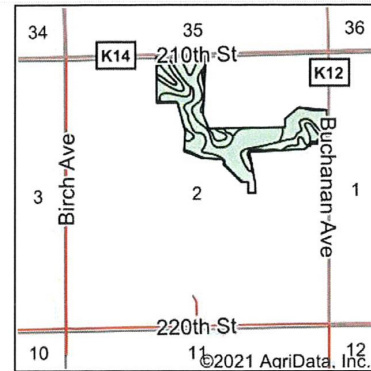
10/11/2021

Field borders provided by Farm Service Agency as of 5/21/2008.

Soils Map



Soils data provided by USDA and NRCS.



State: **Iowa**
 County: **Lyon**
 Location: **2-98N-48W**
 Township: **Lyon**
 Acres: **71.5**
 Date: **10/11/2021**



Maps Provided By:



| Area Symbol: 1A119, Soil Area Version: 29 | | | | | | | | |
|---------------------------------------------------------------------------------|-----------------------------------------------------------------|-------|------------------|------------------|--------------|-------------|----------|-------------------|
| Code | Soil Description | Acres | Percent of field | Non-Irr Class *c | Irr Class *c | CSR2** | CSR | *n NCCPI Soybeans |
| 430 | Ackmore silt loam, 0 to 2 percent slopes, occasionally flooded | 26.36 | 36.9% | | IIw | 77 | 70 | 86 |
| 33F | Steinauer clay loam, 18 to 25 percent slopes | 14.50 | 20.3% | | VIe | 5 | 5 | 36 |
| 486 | Davis loam, 0 to 2 percent slopes | 7.65 | 10.7% | | Iw | 66 | 70 | 82 |
| 33E | Steinauer clay loam, 14 to 18 percent slopes | 6.00 | 8.4% | | IVe | 19 | 19 | 53 |
| 33G | Steinauer clay loam, 25 to 40 percent slopes | 4.89 | 6.8% | | VIIe | 6 | 5 | 11 |
| 401D2 | Crofton silt loam, 9 to 14 percent slopes, eroded | 4.55 | 6.4% | | IIIe | 34 | | 64 |
| 410C2 | Moody silty clay loam, cool, 6 to 11 percent slopes, eroded | 2.80 | 3.9% | | IIIe | 65 | 48 | 63 |
| 33D | Steinauer clay loam, 9 to 14 percent slopes | 2.69 | 3.8% | | IVe | 31 | 33 | 54 |
| 27B | Terril loam, 2 to 5 percent slopes | 0.75 | 1.0% | | Ile | 86 | 63 | 71 |
| 37B | Alcester silty clay loam, cool, 2 to 6 percent slopes | 0.38 | 0.5% | | Ile | 73 | | 74 |
| 401C2 | Crofton silt loam, 5 to 9 percent slopes, eroded | 0.35 | 0.5% | | IIIe | 58 | | 68 |
| 411C2 | Egan silty clay loam, 5 to 9 percent slopes, moderately eroded | 0.32 | 0.4% | | IIIe | 67 | 44 | 60 |
| 411D2 | Egan silty clay loam, 9 to 14 percent slopes, moderately eroded | 0.15 | 0.2% | | IIIe | 41 | 35 | 60 |
| 410B | Moody silty clay loam, cool, 2 to 6 percent slopes | 0.11 | 0.2% | | Ile | 67 | 65 | 72 |
| **IA has updated the CSR values for each county to CSR2 Weighted Average | | | | 3.40 | 0.03 | 46.4 | * | *n 63.5 |

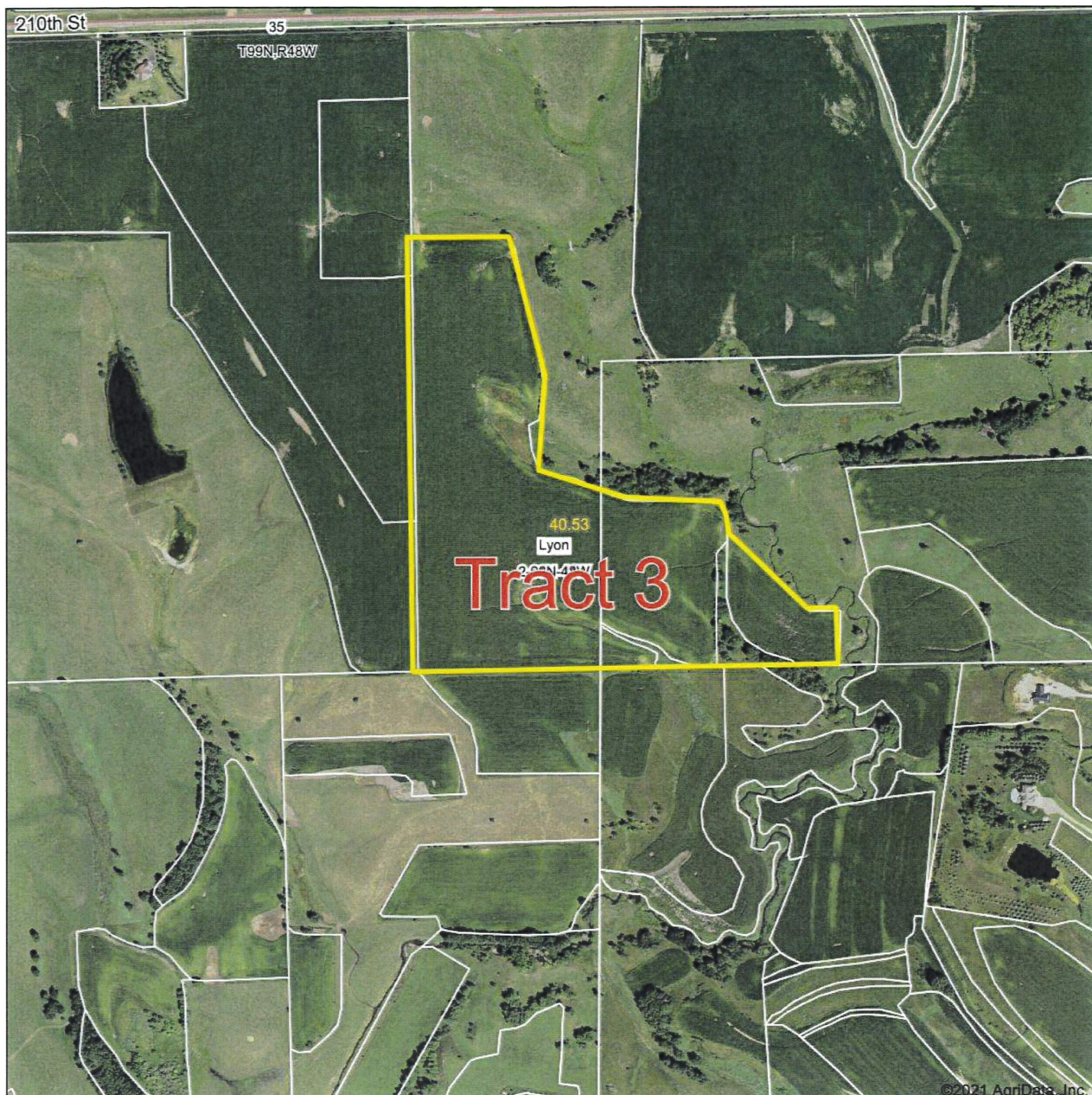
* - CSR weighted average cannot be calculated on the current soils data, use prior data version for csr values.

*n: The aggregation method is "Weighted Average using all components"

*c: Using Capabilities Class Dominant Condition Aggregation Method

Soils data provided by USDA and NRCS.

Aerial Map



Maps Provided By:



© AgriData, Inc. 2021 www.AgrIDataInc.com

Field borders provided by Farm Service Agency as of 5/21/2008.

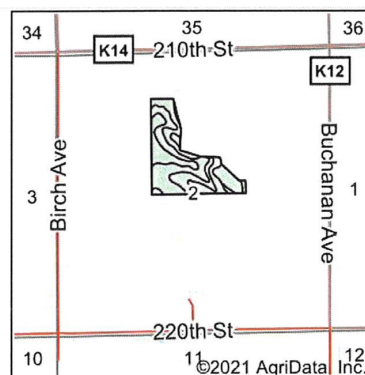
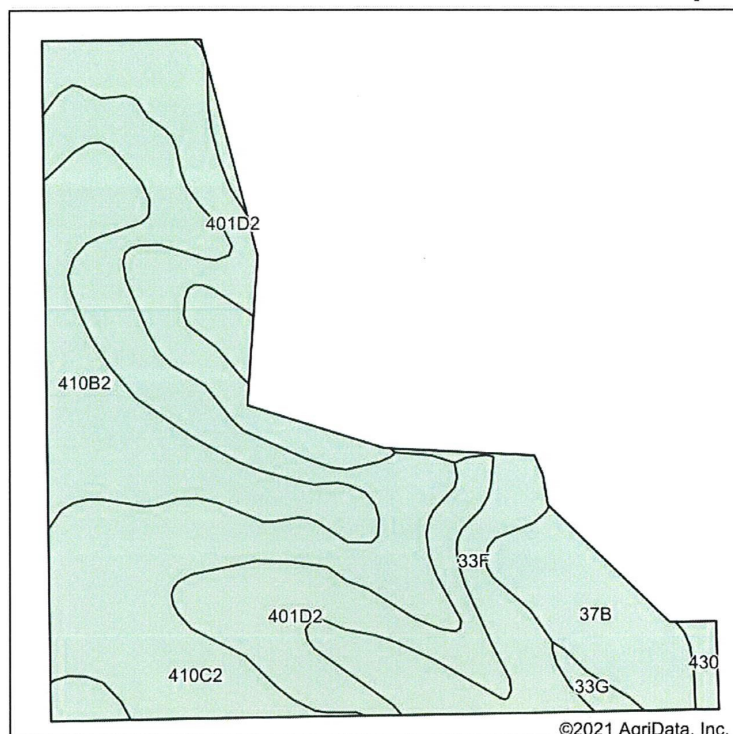
Map Center: 43° 20' 24.85, -96° 28' 39.72

2-98N-48W
Lyon County
Iowa

0ft 665ft 1330ft



Soils Map



State: **Iowa**
 County: **Lyon**
 Location: **2-98N-48W**
 Township: **Lyon**
 Acres: **40.53**
 Date: **10/11/2021**



Maps Provided By:



| Area Symbol: IA119, Soil Area Version: 29 | | | | | | | | |
|-------------------------------------------|----------------------------------------------------------------|-------|------------------|------------------|--------------|-------------|-----------|-------------------|
| Code | Soil Description | Acres | Percent of field | Non-Irr Class *c | Irr Class *c | CSR2** | CSR | *n NCCPI Soybeans |
| 410C2 | Moody silty clay loam, cool, 6 to 11 percent slopes, eroded | 14.02 | 34.6% | IIIe | | 65 | 48 | 63 |
| 401D2 | Crofton silt loam, 9 to 14 percent slopes, eroded | 10.96 | 27.0% | IIIe | | 34 | | 64 |
| 410B2 | Moody silty clay loam, cool, 2 to 6 percent slopes, eroded | 6.50 | 16.0% | Ile | | 67 | 63 | 65 |
| 33F | Steinauer clay loam, 18 to 25 percent slopes | 4.75 | 11.7% | VIe | | 5 | 5 | 36 |
| 37B | Alcester silty clay loam, cool, 2 to 6 percent slopes | 3.53 | 8.7% | Ile | IIIe | 73 | | 74 |
| 430 | Ackmore silt loam, 0 to 2 percent slopes, occasionally flooded | 0.40 | 1.0% | IIw | | 77 | 70 | 86 |
| 33G | Steinauer clay loam, 25 to 40 percent slopes | 0.37 | 0.9% | VIIe | | 6 | 5 | 11 |
| Weighted Average | | | | 3.13 | 0.26 | 50.2 | *- | *n 61.1 |

**IA has updated the CSR values for each county to CSR2.

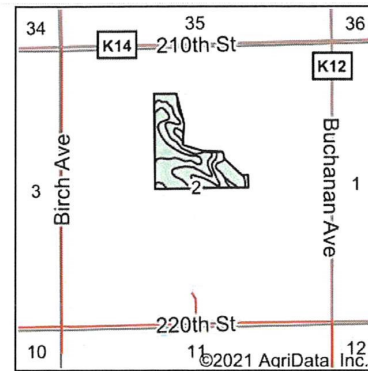
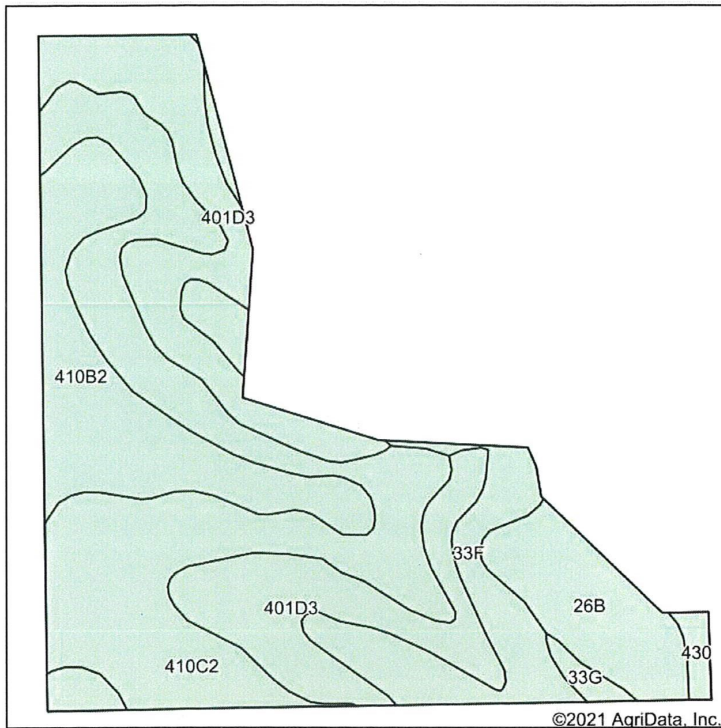
*- CSR weighted average cannot be calculated on the current soils data, use prior data version for csr values.

*n: The aggregation method is "Weighted Average using all components"

*c: Using Capabilities Class Dominant Condition Aggregation Method

Soils data provided by USDA and NRCS.

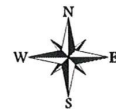
Soils Map



State: Iowa
 County: Lyon
 Location: 2-98N-48W
 Township: Lyon
 Acres: 40.53
 Date: 10/11/2021



Maps Provided By:



Archived Soils Ending 1/21/2012

| Code | Soil Description | Acres | Percent of field | Non-Irr Class *c | CSR* | Alfalfa hay Tons | Brome grass alfalfa AUM | Brome grass alfalfa hay Tons | Corn Bu | Corn Irrigated Bu | Grain sorghum Bu | Kentucky bluegrass AUM | Oats Bu | Smooth brome grass AUM | Soybeans Bu |
|-------|-----------------------------------------------------------------|-------|------------------|------------------|------|------------------|-------------------------|------------------------------|---------|-------------------|------------------|------------------------|---------|------------------------|-------------|
| 410C2 | Moody silty clay loam, 5 to 9 percent slopes, moderately eroded | 14.01 | 34.6% | Ille | 48 | 3 | 5 | | 151 | 105 | 60 | | 81 | | 41 |
| 401D3 | Crofton silt loam, 9 to 14 percent slopes, severely eroded | 10.98 | 27.1% | Ille | 33 | 2.7 | 3.1 | | 131 | | 45 | | 52 | | 26 |
| 410B2 | Moody silty clay loam, 2 to 5 percent slopes, moderately eroded | 6.55 | 16.2% | Ile | 63 | 3.3 | 5.5 | | 171 | 120 | 73 | | 85 | | 42 |
| 33F | Steinauer clay loam, 18 to 25 percent slopes | 4.71 | 11.6% | Vle | 5 | | 3.6 | | | | | 1.9 | | 2.9 | |
| 26B | Kennebec silty clay loam, 2 to 5 percent slopes | 3.53 | 8.7% | Ile | 70 | | 6.3 | 5.1 | 181 | | | 3 | 92 | 5 | 46 |

Soils data provided by USDA and NRCS.

Maps Provided By:



© AgriData, Inc. 2021 www.AgriDataInc.com

| Code | Soil Description | Acres | Percent of field | Non-Irr Class *c | CSR* | Alfalfa hay Tons | Bromegrass alfalfa AUM | Bromegrass alfalfa hay Tons | Corn Bu | Corn Irrigated Bu | Grain sorghum Bu | Kentucky bluegrass AUM | Oats Bu | Smooth bromegrass AUM | Soybeans Bu |
|-------------------------|------------------------------------------------|-------|------------------|------------------|-------------|------------------|------------------------|-----------------------------|--------------|-------------------|------------------|------------------------|-------------|-----------------------|-------------|
| 430 | Ackmore silty clay loam, 1 to 3 percent slopes | 0.39 | 1.0% | Ilw | 70 | | 6.9 | 4.8 | 181 | | | 2.9 | 89 | 4.9 | 45 |
| 33G | Steinauer clay loam, 25 to 40 percent slopes | 0.36 | 0.9% | Vlle | 5 | | | | | | | 1.8 | | | |
| Weighted Average | | | | 3.13 | 43.1 | 2.3 | 4.5 | 0.5 | 132.8 | 55.7 | 44.7 | 0.5 | 64.7 | 0.8 | 32.4 |

*The CSR ratings are dated 1/21/2012 and will be available to aid in the transition to CSR2.

*c: Using Capabilities Class Dominant Condition Aggregation Method

IOWA
LYON

Form: FSA-156EZ

See Page 2 for non-discriminatory Statements.



United States Department of Agriculture
Farm Service Agency

Abbreviated 156 Farm Record

FARM :

Prepared : 10/5/21 11:00 AM

Crop Year : 2022

Operator Name :
Farms Associated with Operator :
CRP Contract Number(s) : None
Recon ID : None
Transferred From : None
ARCPLC G//F Eligibility : Eligible

Farm Land Data

| Farmland | Cropland | DCP Cropland | WBP | WRP | CRP | GRP | Sugarcane | Farm Status | Number Of Tracts |
|--------------------|--------------------|------------------------|----------------|------|------|---------------|-----------|-----------------------|------------------------|
| 78.17 | 41.31 | 41.31 | 0.00 | 0.00 | 0.00 | 0.00 | 0.00 | Active | 1 |
| State Conservation | Other Conservation | Effective DCP Cropland | Double Cropped | | MPL | Acre Election | EWP | DCP Ag. Rel. Activity | Broken From Native Sod |
| 0.00 | 0.00 | 41.31 | 0.00 | | 0.00 | | 0.00 | 0.00 | 0.00 |

Crop Election Choice

| ARC Individual | ARC County | Price Loss Coverage |
|----------------|-------------|---------------------|
| None | CORN, SOYBN | None |

DCP Crop Data

| Crop Name | Base Acres | CCC-505 CRP Reduction Acres | PLC Yield | HIP |
|-----------|------------|-----------------------------|-----------|-----|
| Corn | 19.10 | 0.00 | 162 | 0 |
| Soybeans | 19.00 | 0.00 | 49 | |
| TOTAL | 38.10 | 0.00 | | |

NOTES

Tract Number :
Description : S2 NE4 SEC 2 LYON TWP 98 48
FSA Physical Location : IOWA/LYON
ANSI Physical Location : IOWA/LYON
BIA Unit Range Number :
HEL Status : HEL field on tract.Conservation system being actively applied
Wetland Status : Wetland determinations not complete
WL Violations : None
Owners : MARY SMIDT
Other Producers :
Recon ID : None

Tract Land Data

| Farm Land | Cropland | DCP Cropland | WBP | WRP | CRP | GRP | Sugarcane |
|--------------------|--------------------|------------------------|----------------|------|------|-----------------------|------------------------|
| 78.17 | 41.31 | 41.31 | 0.00 | 0.00 | 0.00 | 0.00 | 0.00 |
| State Conservation | Other Conservation | Effective DCP Cropland | Double Cropped | MPL | EWP | DCP Ag. Rel. Activity | Broken From Native Sod |
| 0.00 | 0.00 | 41.31 | 0.00 | 0.00 | 0.00 | 0.00 | 0.00 |

DCP Crop Data

| Crop Name | Base Acres | CCC-505 CRP Reduction Acres | PLC Yield |
|-----------|------------|-----------------------------|-----------|
|-----------|------------|-----------------------------|-----------|

IOWA
LYON
Form: FSA-156EZ



United States Department of Agriculture
Farm Service Agency

Abbreviated 156 Farm Record

FARM :
Prepared : 10/5/21 11:00 AM
Crop Year : 2022

| | | | |
|--------------|--------------|-------------|-----|
| Corn | 19.10 | 0.00 | 162 |
| Soybeans | 19.00 | 0.00 | 49 |
| TOTAL | 38.10 | 0.00 | |

NOTES

In accordance with Federal civil rights law and U.S. Department of Agriculture (USDA) civil rights regulations and policies, the USDA, its Agencies, offices, and employees, and institutions participating in or administering USDA programs are prohibited from discriminating based on race, color, national origin, religion, sex, gender identity (including gender expression), sexual orientation, disability, age, marital status, family/parental status, income derived from a public assistance program, political beliefs, or reprisal or retaliation for prior civil rights activity, in any program or activity conducted or funded by USDA (not all bases apply to all programs). Remedies and complaint filing deadlines vary by program or incident.

Persons with disabilities who require alternative means of communication for program information (e.g., Braille, large print, audiotape, American Sign Language, etc.) should contact the responsible Agency or USDA's TARGET Center at (202) 720-2600 (voice and TTY) or contact USDA through the Federal Relay Service at (800) 877-8339. Additionally, program information may be made available in languages other than English.

To file a program discrimination complaint, complete the USDA Program Discrimination Complaint Form, AD-3027, found online at http://www.ascr.usda.gov/complaint_filing_cust.html and at any USDA office or write a letter addressed to USDA and provide in the letter all of the information requested in the form. To request a copy of the complaint form, call (866) 632-9992. Submit your completed form or letter to USDA by (1) mail: U.S. Department of Agriculture, Office of the Assistant Secretary for Civil Rights, 1400 Independence Avenue, SW, Washington, D.C. 20250-9410; (2) fax: (202) 690-7442; or (3) e-mail: program.intake@usda.gov. USDA is an equal opportunity provider, employer, and lender.



Lyon County, Iowa



Common Land Unit
Cropland Non-cropland CRP

Farm
Tract

Wetland Determination Identifiers

- Restricted Use
- ▼ Limited Restrictions
- Exempt from Conservation Compliance Provisions

2021 Crop Year



Tract 1 of 1

United States Department of Agriculture (USDA) Farm Service Agency (FSA) maps are for FSA Program administration only. This map does not represent a legal survey or reflect actual ownership; rather it depicts the information provided directly from the producer and/or National Agricultural Imagery Program (NAIP) imagery. The producer accepts the data 'as is' and assumes all risks associated with its use. USDA-FSA assumes no responsibility for actual or consequential damage incurred as a result of any user's reliance on this data outside FSA Programs. Wetland identifiers do not represent the size, shape, or specific determination of the area. Refer to your original determination (CPA-026 and attached maps) for exact boundaries and determinations or contact USDA Natural Resources Conservation Service (NRCS).

IOWA
LYON

Form: FSA-156EZ

See Page 2 for non-discriminatory Statements.



United States Department of Agriculture
Farm Service Agency

Abbreviated 156 Farm Record

FARM :

Prepared : 10/5/21 11:00 AM

Crop Year : 2022

Operator Name :
Farms Associated with Operator :
CRP Contract Number(s) : None
Recon ID : None
Transferred From : None
ARCPLC G//F Eligibility : Eligible

Farm Land Data

| Farmland | Cropland | DCP Cropland | WBP | WRP | CRP | GRP | Sugarcane | Farm Status | Number Of Tracts |
|--------------------|--------------------|------------------------|----------------|------|------|---------------|-----------|----------------------|------------------------|
| 137.21 | 97.48 | 97.48 | 0.00 | 0.00 | 0.00 | 0.00 | 0.00 | Active | 1 |
| State Conservation | Other Conservation | Effective DCP Cropland | Double Cropped | | MPL | Acre Election | EWP | DCP Ag.Rel. Activity | Broken From Native Sod |
| 0.00 | 0.00 | 97.48 | 0.00 | | 0.00 | | 0.00 | 0.00 | 0.00 |

Crop Election Choice

| ARC Individual | ARC County | Price Loss Coverage |
|----------------|-------------|---------------------|
| None | CORN, SOYBN | None |

DCP Crop Data

| Crop Name | Base Acres | CCC-505 CRP Reduction Acres | PLC Yield | HIP |
|-----------|------------|-----------------------------|-----------|-----|
| Corn | 62.70 | 0.00 | 162 | 0 |
| Soybeans | 23.30 | 0.00 | 49 | |
| TOTAL | 86.00 | 0.00 | | |

NOTES

Tract Number :
Description : N2 NE4 & E2 E2 NW4 SEC 2 LYON TWP 98 48
FSA Physical Location : IOWA/LYON
ANSI Physical Location : IOWA/LYON
BIA Unit Range Number :
HEL Status : HEL field on tract.Conservation system being actively applied
Wetland Status : Wetland determinations not complete
WL Violations : None
Owners : KENNETH S KNUDSON REV TRUST
Other Producers : None
Recon ID : None

Tract Land Data

| Farm Land | Cropland | DCP Cropland | WBP | WRP | CRP | GRP | Sugarcane |
|--------------------|--------------------|------------------------|----------------|------|------|----------------------|------------------------|
| 137.21 | 97.48 | 97.48 | 0.00 | 0.00 | 0.00 | 0.00 | 0.00 |
| State Conservation | Other Conservation | Effective DCP Cropland | Double Cropped | MPL | EWP | DCP Ag. Rel Activity | Broken From Native Sod |
| 0.00 | 0.00 | 97.48 | 0.00 | 0.00 | 0.00 | 0.00 | 0.00 |

DCP Crop Data

| Crop Name | Base Acres | CCC-505 CRP Reduction Acres | PLC Yield |
|-----------|------------|-----------------------------|-----------|
|-----------|------------|-----------------------------|-----------|

IOWA
LYON
Form: FSA-156EZ



United States Department of Agriculture
Farm Service Agency

FARM :
Prepared : 10/5/21 11:00 AM
Crop Year : 2022

Abbreviated 156 Farm Record

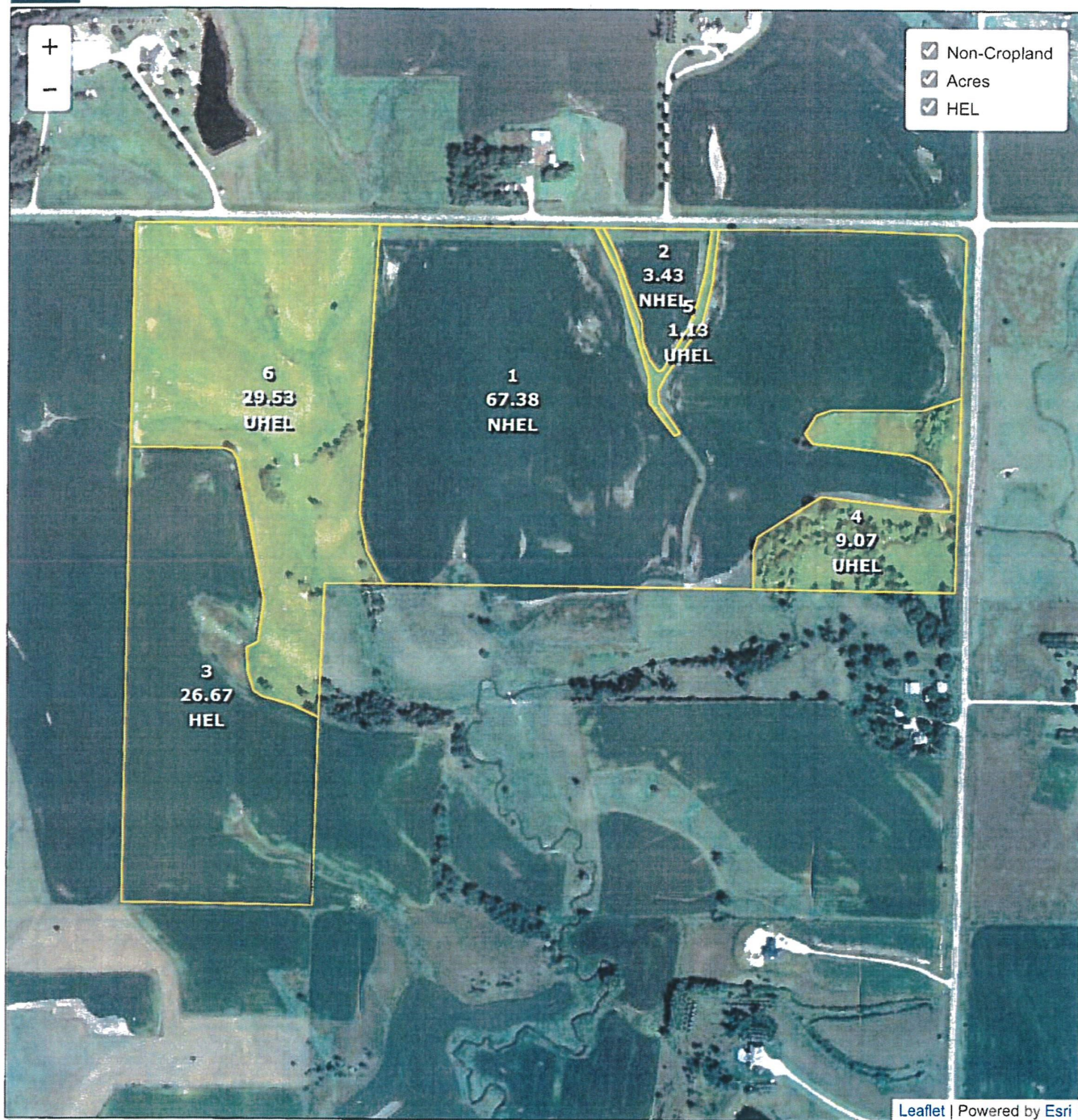
| | | | |
|--------------|--------------|-------------|-----|
| Corn | 62.70 | 0.00 | 162 |
| Soybeans | 23.30 | 0.00 | 49 |
| TOTAL | 86.00 | 0.00 | |

NOTES

In accordance with Federal civil rights law and U.S. Department of Agriculture (USDA) civil rights regulations and policies, the USDA, its Agencies, offices, and employees, and institutions participating in or administering USDA programs are prohibited from discriminating based on race, color, national origin, religion, sex, gender identity (including gender expression), sexual orientation, disability, age, marital status, family/parental status, income derived from a public assistance program, political beliefs, or reprisal or retaliation for prior civil rights activity, in any program or activity conducted or funded by USDA (not all bases apply to all programs). Remedies and complaint filing deadlines vary by program or incident.

Persons with disabilities who require alternative means of communication for program information (e.g., Braille, large print, audiotape, American Sign Language, etc.) should contact the responsible Agency or USDA's TARGET Center at (202) 720-2600 (voice and TTY) or contact USDA through the Federal Relay Service at (800) 877-8339. Additionally, program information may be made available in languages other than English.

To file a program discrimination complaint, complete the USDA Program Discrimination Complaint Form, AD-3027, found online at http://www.ascr.usda.gov/complaint_filing_cust.html and at any USDA office or write a letter addressed to USDA and provide in the letter all of the information requested in the form. To request a copy of the complaint form, call (866) 632-9992. Submit your completed form or letter to USDA by (1) mail, U.S. Department of Agriculture, Office of the Assistant Secretary for Civil Rights, 1400 Independence Avenue, SW, Washington, D.C. 20250-9410; (2) fax: (202) 690-7442; or (3) e-mail program.intake@usda.gov. USDA is an equal opportunity provider, employer, and lender.



Common Land Unit
 Cropland Non-cropland CRP

Wetland Determination Identifiers

- Restricted Use
- ▼ Limited Restrictions
- Exempt from Conservation Compliance Provisions

Leaflet | Powered by Esri

2021 Crop Year

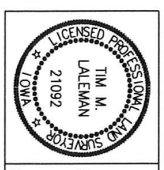


Tract 1 of 1

United States Department of Agriculture (USDA) Farm Service Agency (FSA) maps are for FSA Program administration only. This map does not represent a legal survey or reflect actual ownership, rather it depicts the information provided directly from the producer and/or National Agricultural Imagery Program (NAIP) imagery. The producer accepts the data 'as is' and assumes all risks associated with its use. USDA-FSA assumes no responsibility for actual or consequential damage incurred as a result of any user's reliance on this data outside FSA Programs. Wetland identifiers do not represent the size, shape, or specific determination of the area. Refer to your original determination (CPA-026 and attached maps) for exact boundaries and determinations or contact USDA Natural Resources Conservation Service (NRCS).

REVIEW DRAFT
9-29-21

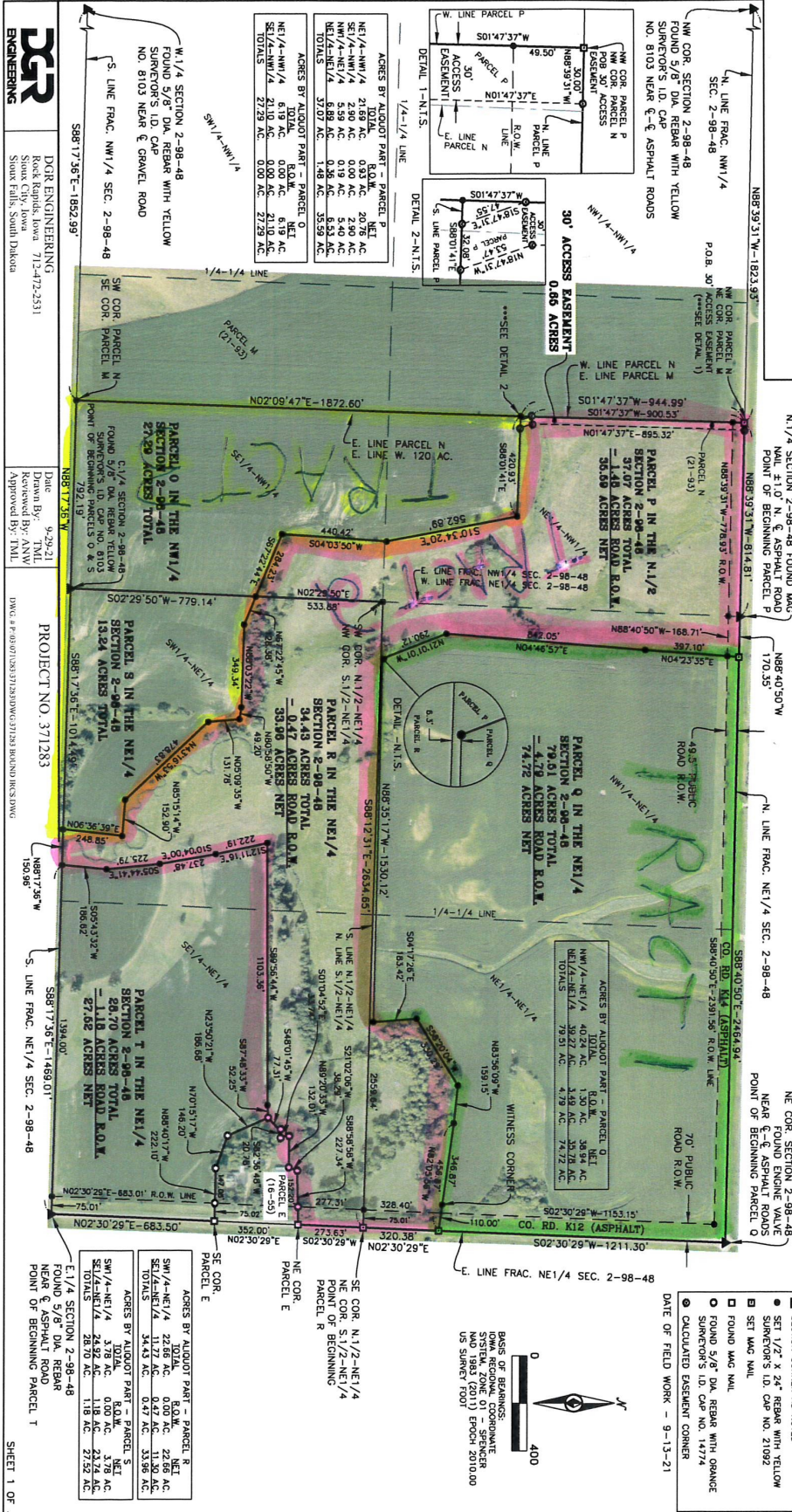
PLAT OF SURVEY
PARCEL O IN THE NW1/4, PARCEL P IN THE N1/2 AND
PARCELS Q, R, S AND T IN THE NE1/4
FRACTIONAL SECTION 2-98-48
LYON COUNTY, IOWA



I hereby certify that this land surveying document was prepared and finished in accordance with the requirements of the Iowa Code, Chapter 177, and that I am a duly Licensed Land Surveyor under the laws of the State of Iowa.

By: **TIM M. LALEMAN**, L.S. License No. 21092
My license renewal date is December 31, 2021

Sheets covered by this plat: SHEETS 1 OF 3, 2 OF 3 AND 3 OF 3



ENGINEERING
DOR ENGINEERING
Rock Rapids, Iowa 51201-2531
Shane Feltz, State of Iowa
Shane Feltz, State of Iowa

Date: 9-29-21
Drawn By: TML
Checked By: TML
Approved By: TML

PROJECT NO. 371283
IOWA # 01807120371283 (IOWA) (IOWA) (IOWA)

SHEET 1 OF 3

ZOMER COMPANY

PRESENTED BY

Mark Zomer — Broker - 712-470-2526

Darrell Vande Vegte — Sales-712-470-1125

Gary Van Den Berg — Sales - 712-470-2068

Ryan Zomer — Sales - 712-441-3970

Blake Zomer — Sales - 712-460-2552

Licensed in Iowa, South Dakota and Minnesota

If you are thinking about selling your property—
Call today and let us explain our services and marketing strategies.
We understand that selling your Acreage, Farmland, Equipment,
Personal Property etc. is one of the most important things you will
do in your lifetime and we Thank You in advance for your trust
and confidence in our firm.

See our website

www.zomercompany.com

[or www.zomerauctions.com](http://www.zomerauctions.com)

for our past successful results